



Caribbean Meteorological Council 63rd Session Cayman Islands, 2022



Saint Vincent and the
Grenadines
Meteorological Services



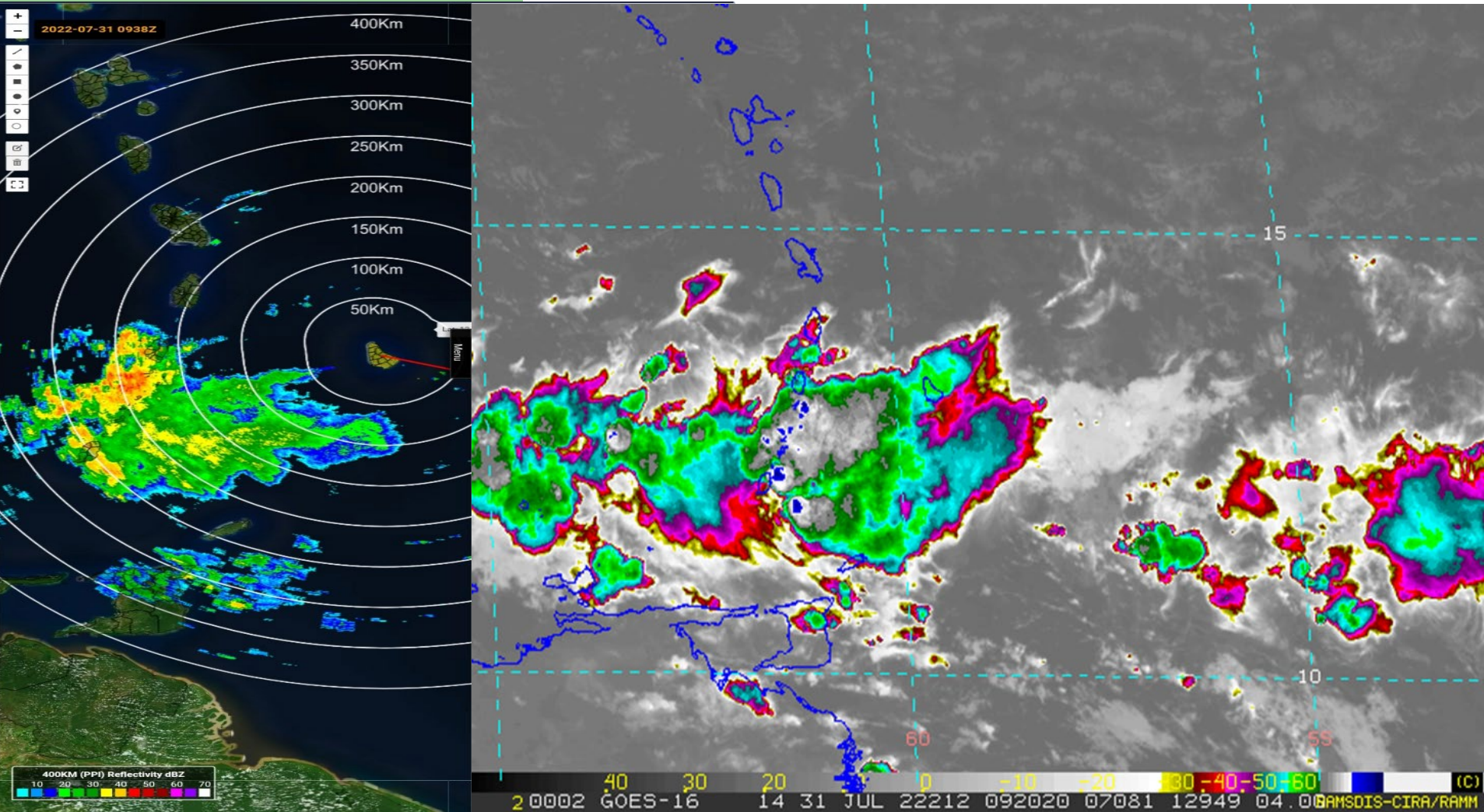


TOPICS

- Tropical Wave – 31st July, 2022
- Tropical Storm Fiona – Feeder Bands
- Impact of Excessive Rainfall
- Update on La Soufriere Volcanic Activity



Tropical Wave - July 31st



- Maximum wind gust 29 knots (33 mph) at Argyle. This occurred for 11 consecutive minutes.



Tropical Wave - July 31st Impact

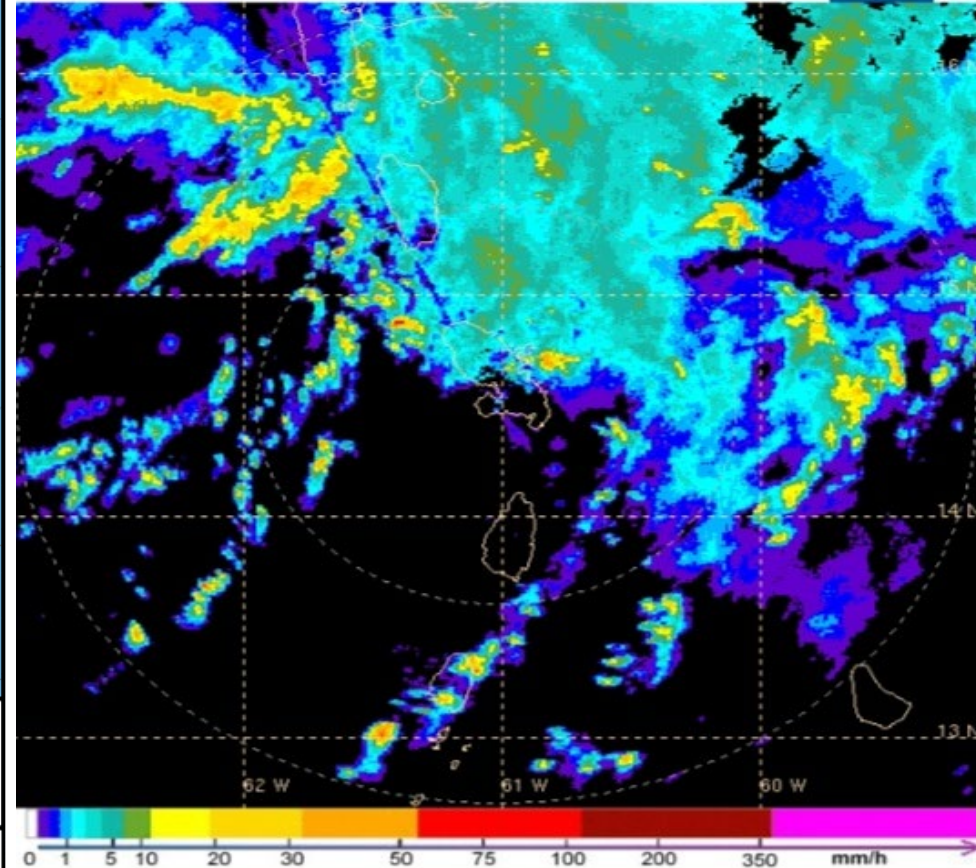


- Down utility poles. Damages to houses and other infrastructure which were mainly on Bequia.
- Damages & losses assessments are ongoing.

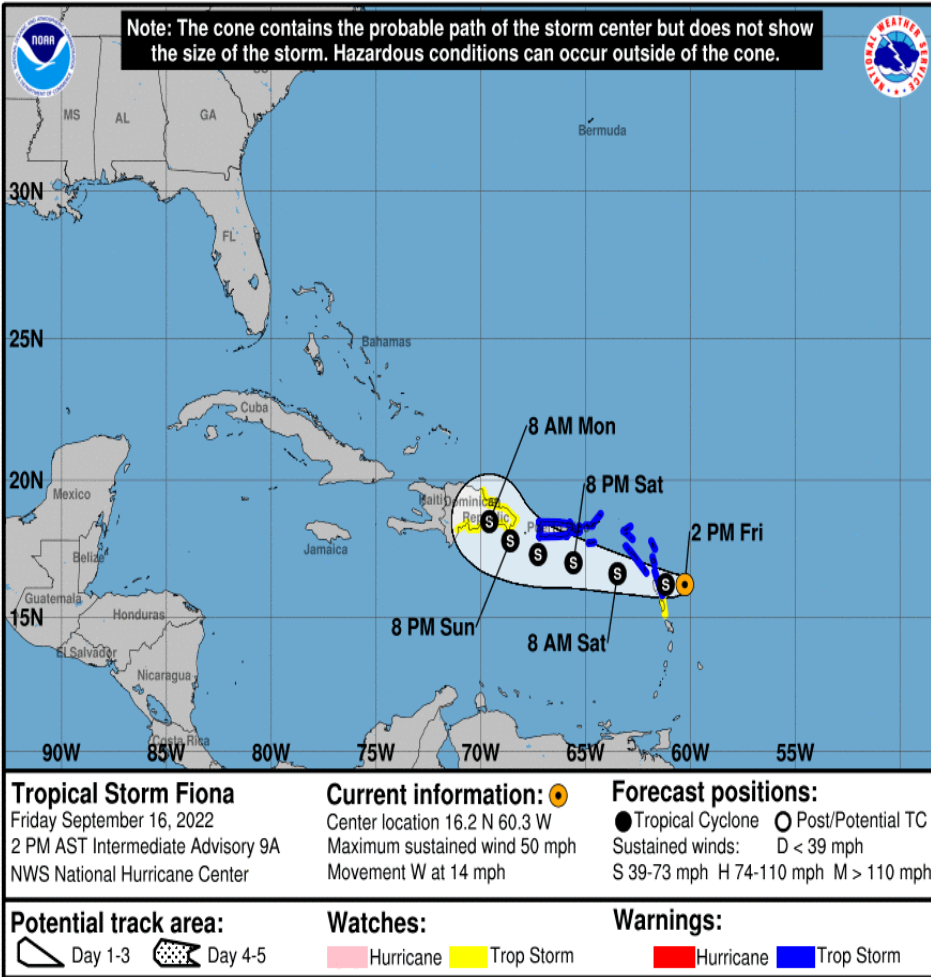
TS Fiona Sep. 17th & 18th



Radar Martinique 17/09/22 03:00 locales



© Météo France 2016 - Tous droits de reproduction réservés



- SVG affected by feeder bands associated with Tropical Storm Fiona.
- Owia recorded 256.4 mm (10.1 inches) during the 2-day event



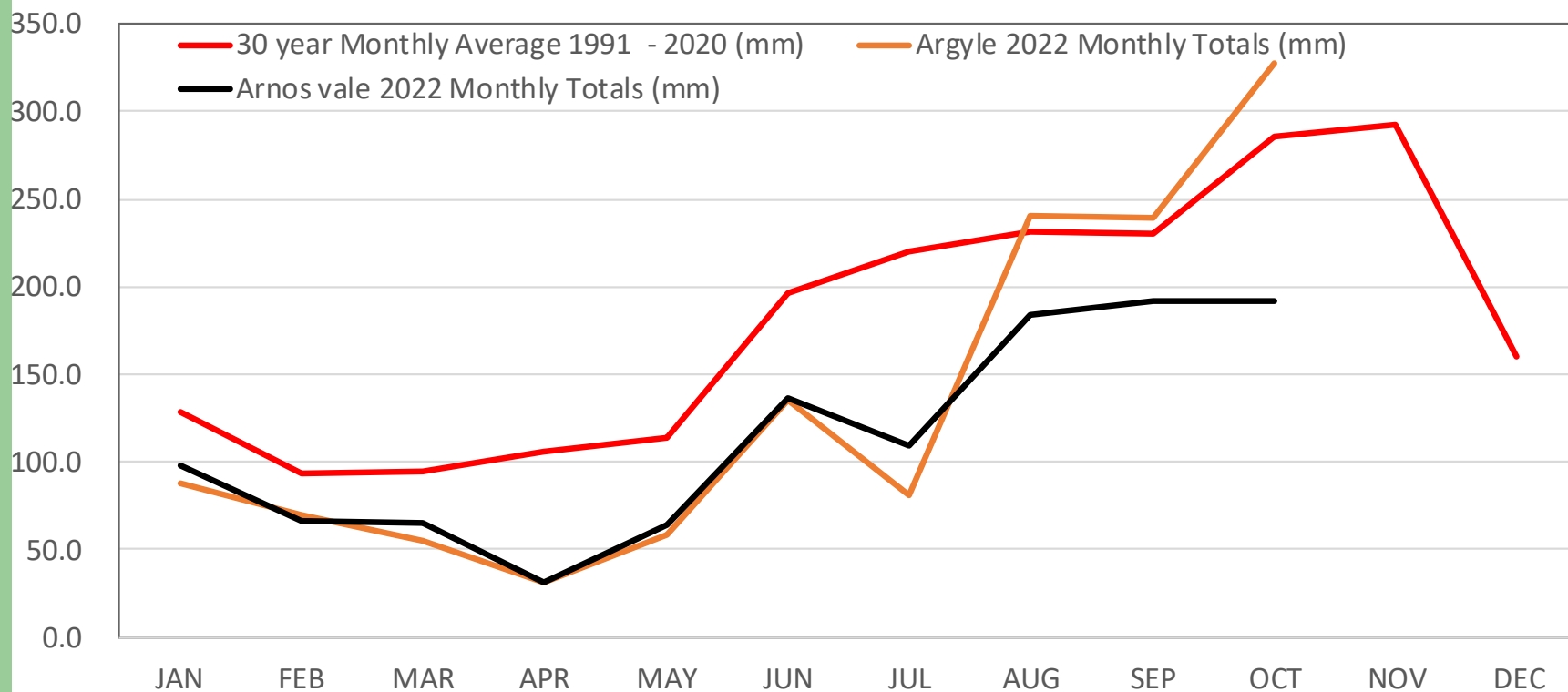
TS Fiona Sep. 17th & 18th



- Reports after the passage of the system include; down retaining walls, lahars, landslides and flooding.
- Damages & losses assessments are ongoing.



Line chart E.T Joshua 1991-2020 Monthly Average Rainfall (mm) vs 2022 E.T Joshua & Argyle Monthly totals



Min. of Agriculture Survey

Impact of excessive rainfall



SVG: Shortage of specific vegetables to hit consumers in coming months

Ernesto Cooke – October 11, 2022

National Rainfall Outlook: Sept-Nov 2022 for SVG

- Rainfall is predicted to be above usual or the usual
- Drought is not expected to be a concern at this time across SVG.

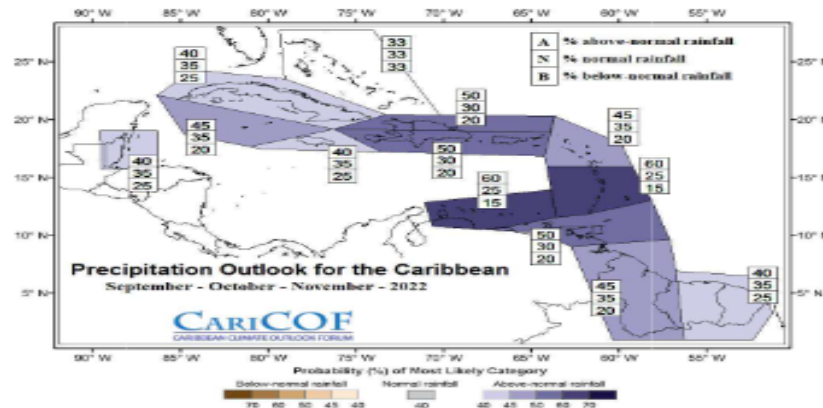


Fig 5 Regional Precipitation Outlook Sept-Oct-Nov 2022

Advisory Statements

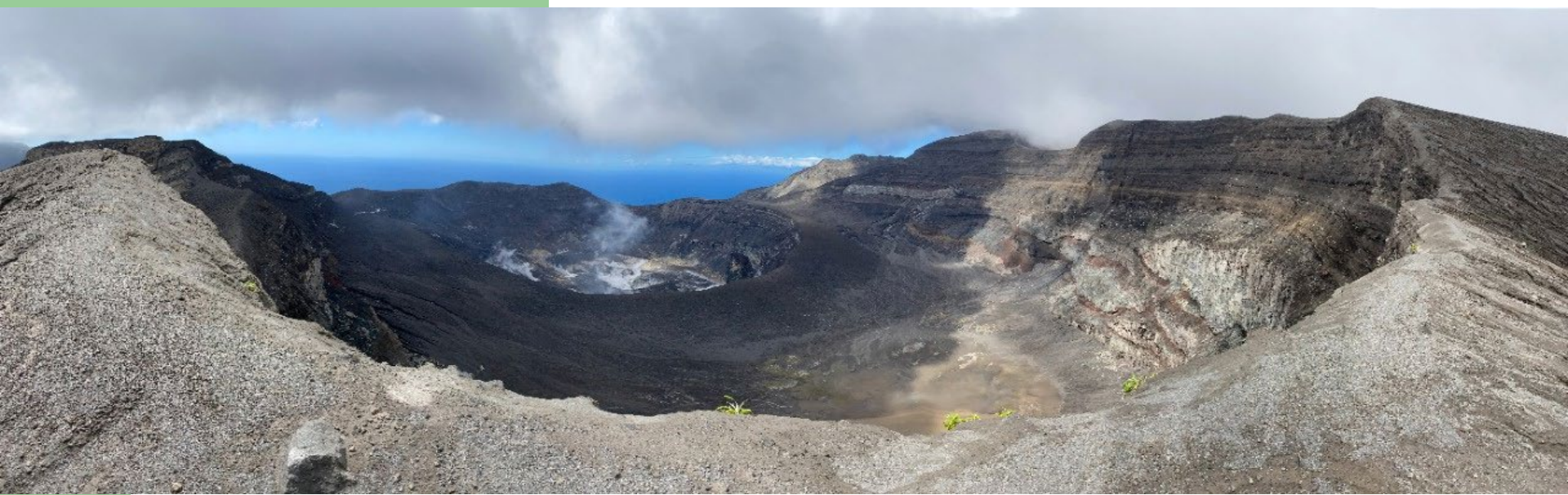
Water: The availability of water may be disrupted during the passage of weather systems during the upcoming months. Residents are advised to store adequate quantities of water for drinking and sanitation purposes

Agriculture: Farmers should continue to pay attention to weather bulletins in order to secure their equipment, crops and livestock. Consideration should be given to the type of crops planted due to the possibility of heavy rains

- **80% to 100%** losses of carrots, cucumbers, watermelons and peanuts, and between **50% to 70%** losses of tomatoes, cabbages and sweet peppers. Losses reported range between \$1000 to \$10000
- Farmers unable to prepare lands; No fertilizer applications; Poor growth due to reduced sunlight



Update on La Soufriere Activity



- The volcano is at alert level “Green. However, persistent degassing and occasional minor earthquakes are ongoing.



Secondary hazards - Lahars



- Residents living in the valleys of the volcano have to contend with lahars at Noel and Overland Rivers. Bridges are currently being installed at these two crossings.
- Water disruption continues during heavy rainfall in some communities. The Central Water and Sewerage Authority (CWSA) locks off water system to avoid contamination.



Thank You

QUESTIONS?