

Weather impacts in Jamaica in 2022



Jacqueline Spence-Hemmings
Meteorological Service of Jamaica
November 23, 2022

February 1

Post-Frontal Trough

- Heavy rainfall over a 2-day period results in several rivers overflowing their banks.
- Flash flooding in several northern parishes.
- Major flash flooding in Port Maria, the parish capital of St. Mary as, the Otram River overflowed its banks.
- Flash Flooding in Runaway Bay in St. Ann.
- Flooding of farms in Seaman's Valley in Portland.

- https://www.youtube.com/watch?v=7nt_aTJoeOw
- https://www.youtube.com/watch?v=_HoxQlgP4hU
- <https://www.youtube.com/watch?v=Ehwl3na6Wok>

April 18-19

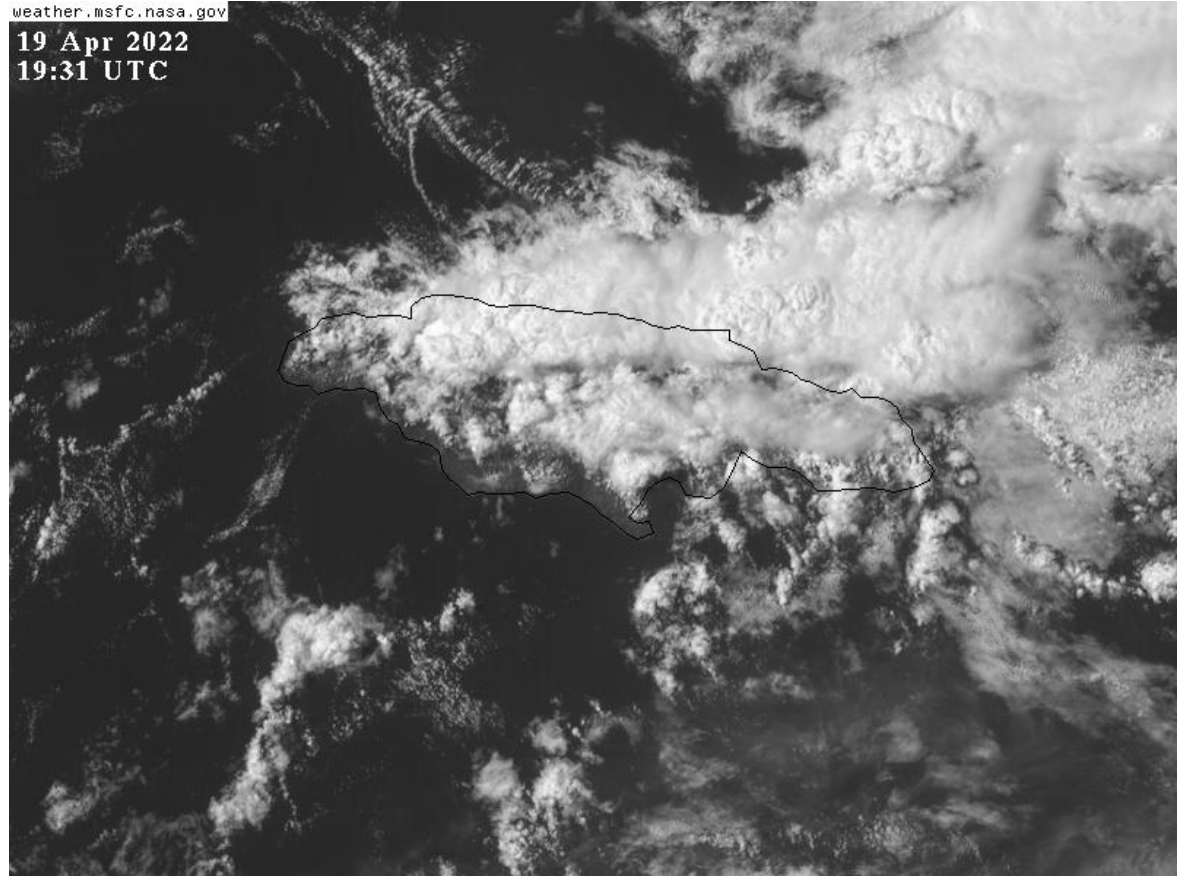
Surface Trough
interacting with a
Mid to Upper-
Level Trough over
the western
Caribbean

- Heavy rainfall over a 2-day period resulted in several rivers overflowing their banks.
- Flooding in Hordley and Golden Grove in St. Thomas in the island's southeast.
- Flash flooding in Montego Bay, St. James and Lucea, Hanover in the island's northwest.
- Family of 4 persons washed away in a car resulting in 2 deaths.

April 18-19

weather.msfc.nasa.gov

**19 Apr 2022
19:31 UTC**



July 2

A Trough induced by Tropical Storm Bonnie which was inland over Nicaragua.

- Violent winds (freak storm) during a thunderstorm.
- Roofs blown off buildings, downed trees and utility poles at the Aberdeen High School in NE St. Elizabeth.
- Roofs damaged on 4 houses in Unions Housing Scheme in nearby district of Balaclava.

Damage in St.
Elizabeth



August 20

Upper-Level
Trough moving
across Jamaica

- Rainfall over sections of all parishes.
- Heavy rainfall over a 3-hours period.
- Flash flooding in Santa Cruz in eastern St. Elizabeth.
- Residents and businesses affected.

September 24-26

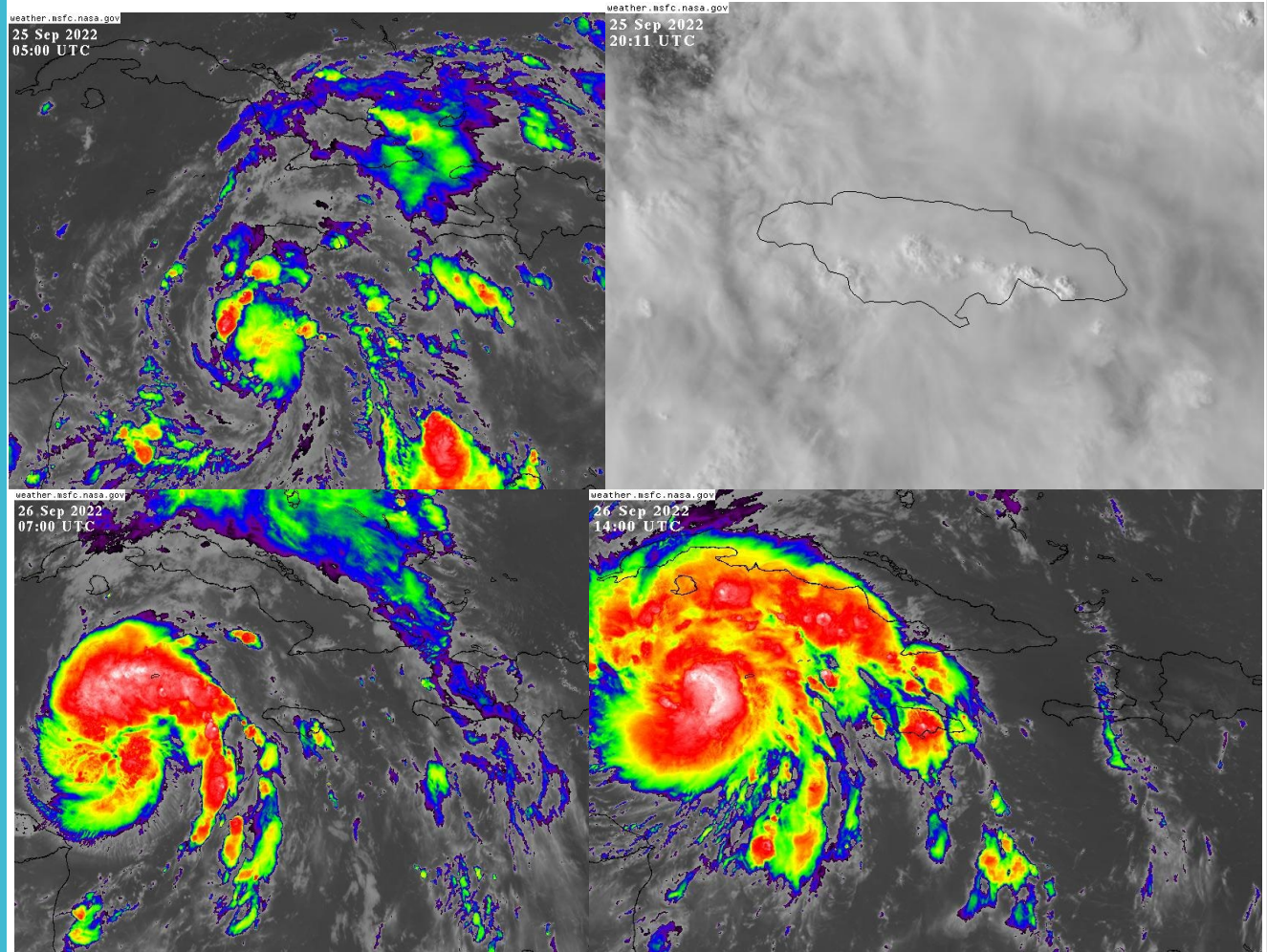
Ian moving across
the western
Caribbean

- Rainfall over sections of all parishes over the 3 days.
- Flooding in sections of several parishes.
- Landslides in several hilly areas.
- Significant damage to road network.

- <https://www.youtube.com/watch?v=QopCKRVHHq4>
- https://www.youtube.com/watch?v=ul_a1vY4WiY



Images of Tropical Storm Ian close to Jamaica



Mud blocks a section
of the St Toolies
Road in Manchester
on Monday.



