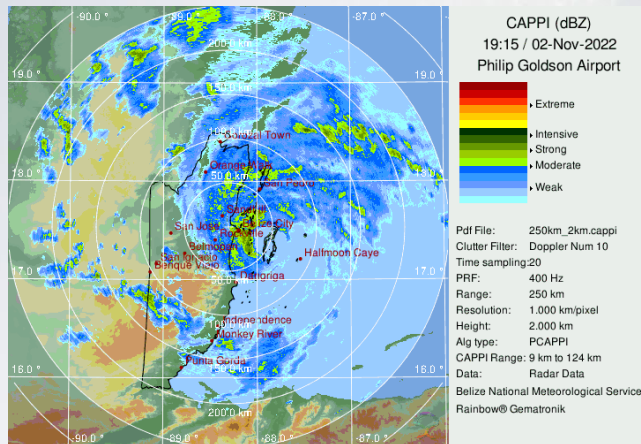
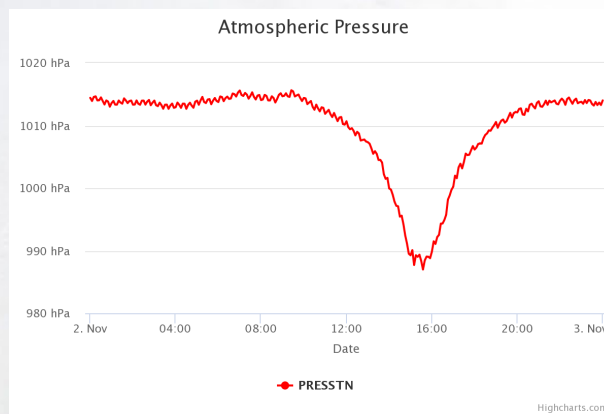
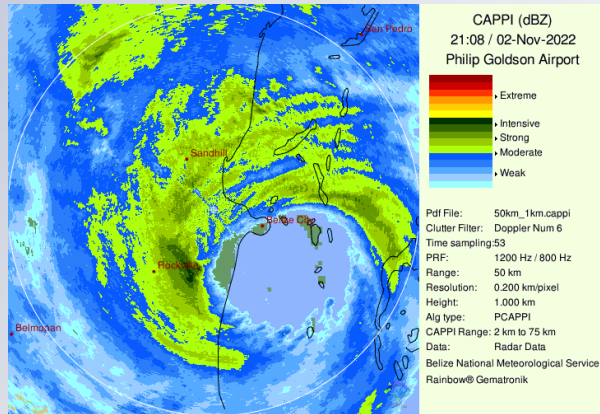


BELIZE

2022 Hurricane Season – Impacts



- 2 tropical cyclone impacted the country, namely Julia (outer bands) and Lisa (direct Landfall)
- Julia produced max rainfall between 4-10 inches over 3 days resulting in flooding; intense thunderstorms and strong winds; and strong wave action; about USD 10 Million in damage mostly to Agriculture and Tourism.
- Lisa made direct landfall with measured sustained winds of 74 mph and gust to 92 mph; rainfall between 5-9 inches; storm surge of around 3-5 feet
- No fatality and no major injuries reported
- Approximately 500 houses completely destroyed
- Belize District, approximately 5,000 houses have been partially destroyed (blown roofs, flooded structures)
- Damages to the housing sector are estimated at US\$10 million with 6,500 families affected.
- Estimated infrastructural and other damages (public roads, buildings, utilities, agriculture, fisheries, tourism) total US\$100 million.

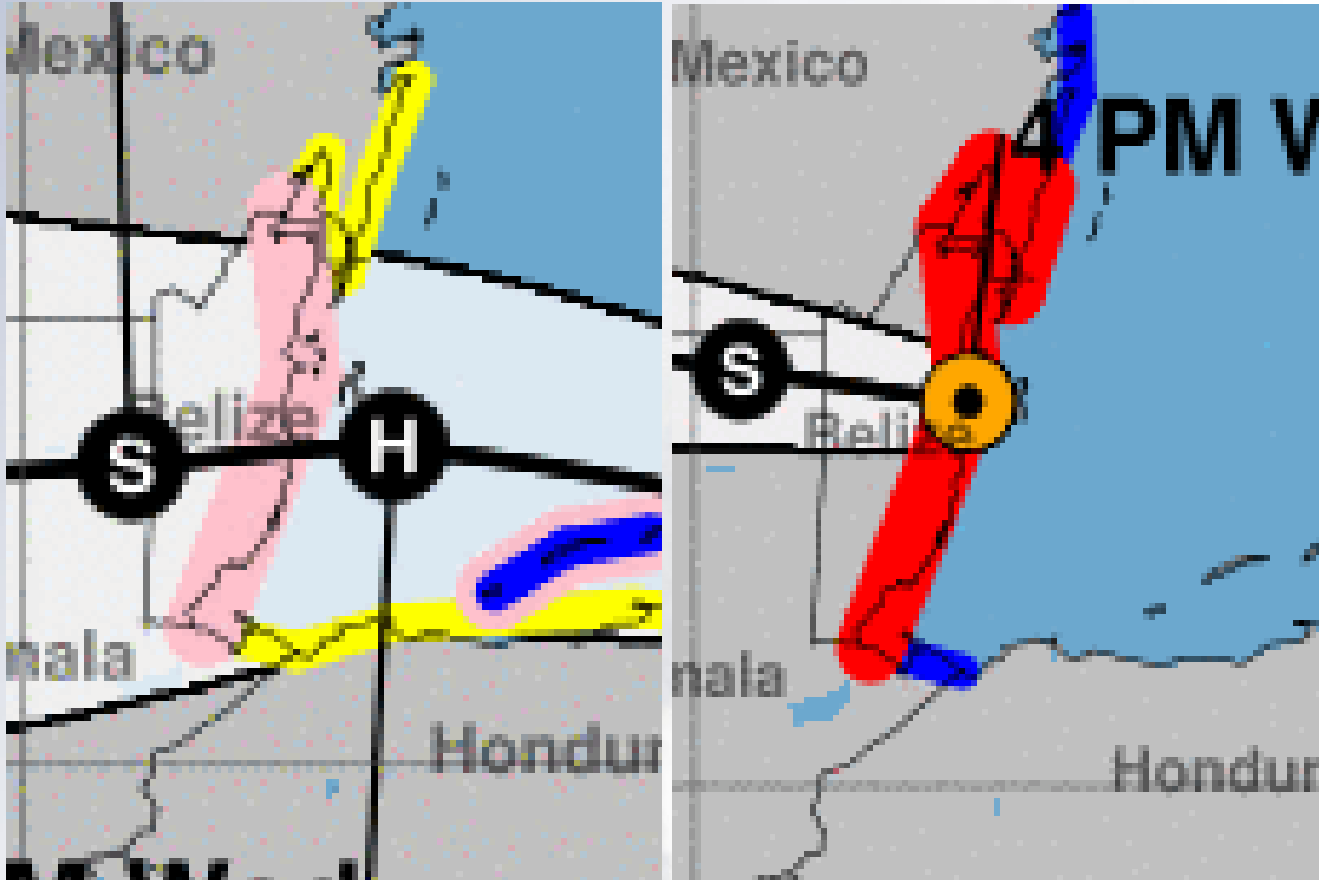
Upper left: Radar image at 2108Z just prior to landfall

Upper right: Pressure reading from POB in Belize City

Lower left: Radar imagery at 1915Z as eyewall began affecting Belize City

Lower right: Rooftop damage to an elementary school in Belize City.

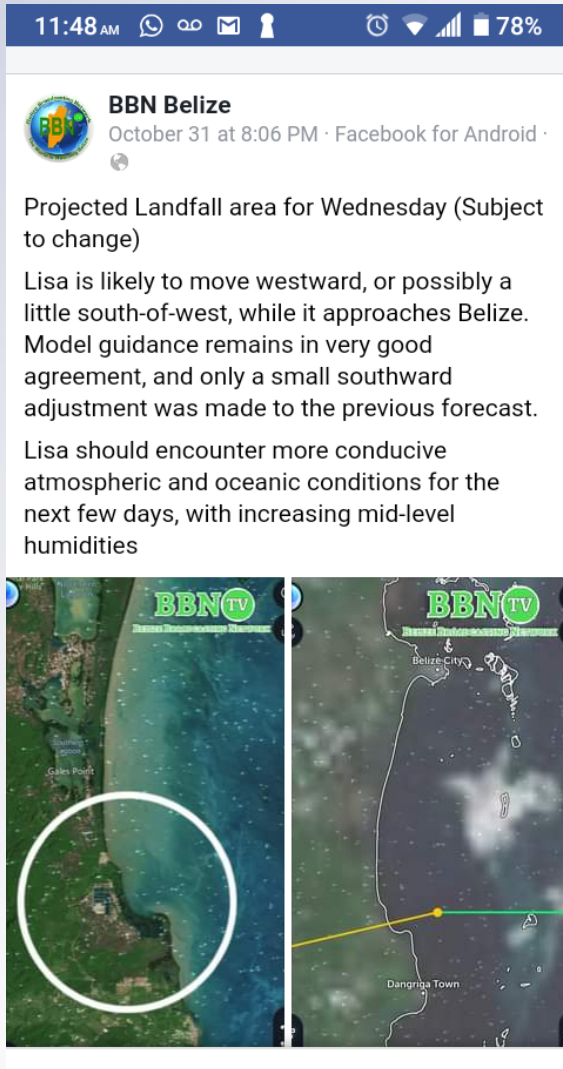
2022 Hurricane Season – Best Practices



- Very good Track Forecast from NHC with landfall location within about a 25 miles margin of error 48 hours prior to landfall
- Joint briefing with the NMS and NEMO coordinated through Gov Press Office
- No fatalities or major injuries as public is well informed and persons continue to take hurricane threat very seriously.

Left: NHC Forecast issued at 21Z Monday Oct 31 showing Lisa making landfall near Dangriga, Belize in the evening/early night of Wednesday November 2. Right: Lisa actually made landfall just 25 miles north of that position at around 21:10Z on Wednesday, November 2.

2022 Hurricane Season – Challenges



- The timing of landfall was a bit challenging; A forecasted slowing down did not materialized as quickly as anticipated. Center of the storm made landfall about 5 hours earlier than was expected a day before landfall. Media and public too focused on exact timing and location of landfall while effects felt long before center moves on shore.
- Continue educating the public about the impacts well away from center and long before center moves onshore. Try not to get dragged into discussion with the media about exact timing and location of landfall. Media houses appear to be playing some kind of competition on who calls where and when center will make landfall first even using official forecast from NHC to do this.
- Non-mainstream media (social media) continues to be a challenge as well with many persons putting out their own “forecasts”.
- Hurricane force winds only extended 15 miles from the center but in an abundance of caution entire country is placed under hurricane warning. Result is that many persons in warning area did not even experience tropical storm force winds and sort of become doubtful of forecasts.

News clip from a local media outlet showing an image narrowing down the landfall to just north of Dangriga town.