



Caribbean Meteorological Council 60th Session

St. Vincent and the Grenadines, 2020 (Virtual)



**Saint Vincent and the
Grenadines
Meteorological Services**



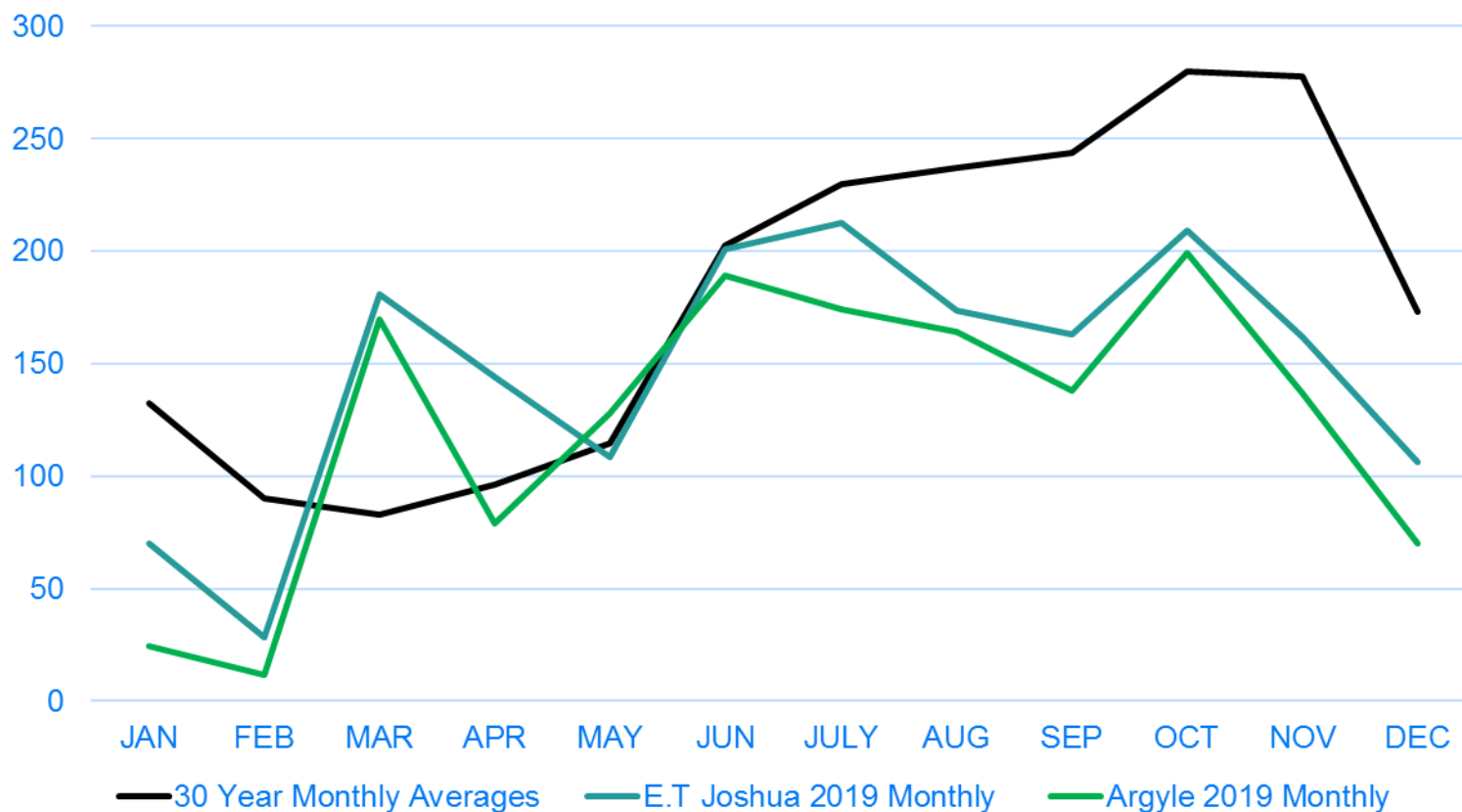
Background

- **Official name:** Saint Vincent and the Grenadines (SVG)
- **Area total:** 389 sq. km (Saint Vincent 344 sq. km)
- **Population:** ~110,000
- **Geographic coordinates:** 13° 09' N..61° 09' W (TVSA)
- **Location:** ~ 100 miles west of Barbados, 75 North north-east of Grenada.



Drought Situation

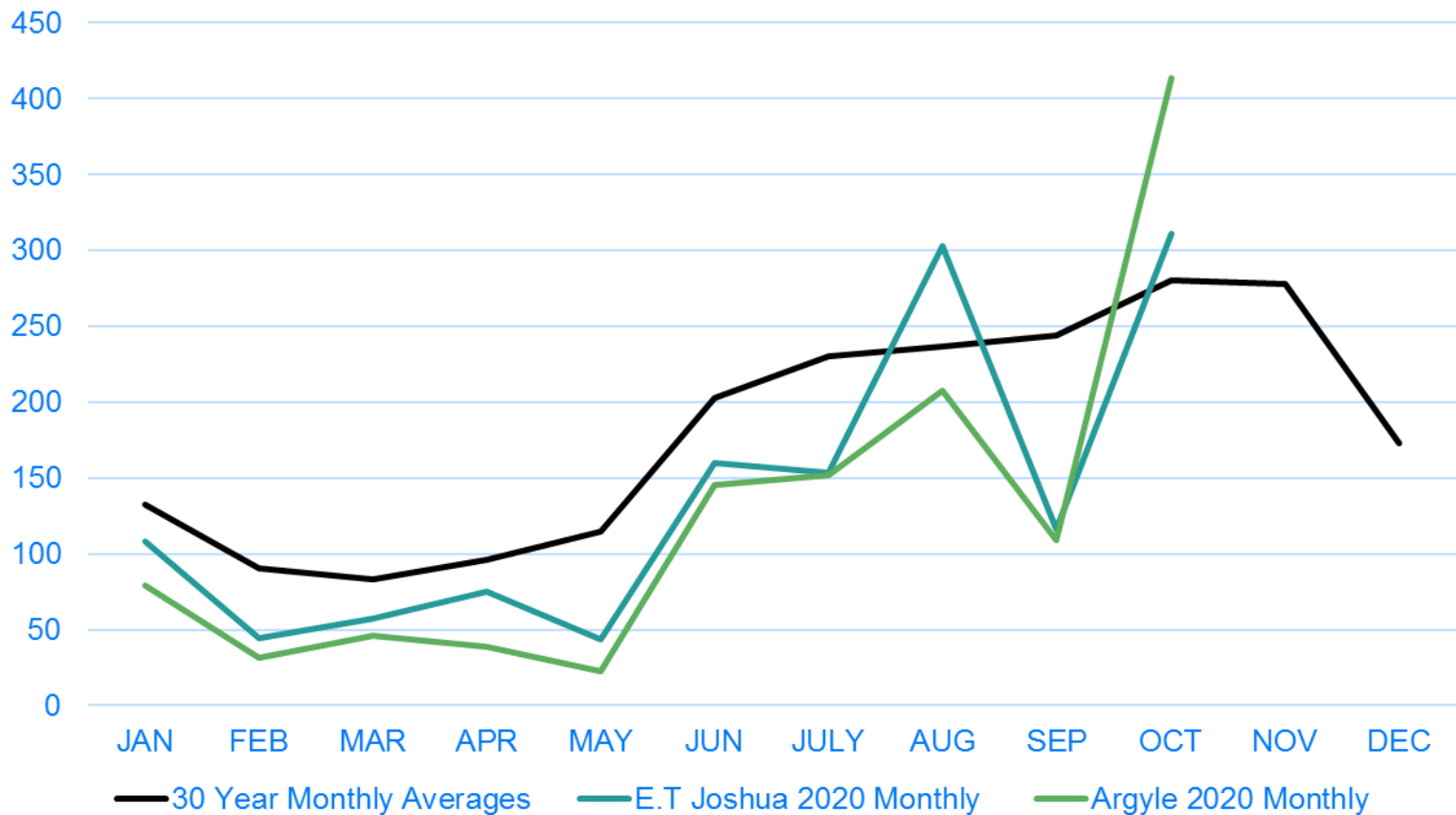
**Line chart E.T Joshua 1981-2010 Monthly Average Rainfall (mm)
vs 2019 E.T Joshua & Argyle Monthly totals**





Drought Situation

**Line chart E.T Joshua 1981-2010 Monthly Average Rainfall (mm)
vs 2020 E.T Joshua & Argyle Monthly totals**





CENTRAL WATER & SEWERAGE AUTHORITY DRY WEATHER WATER DISRUPTION

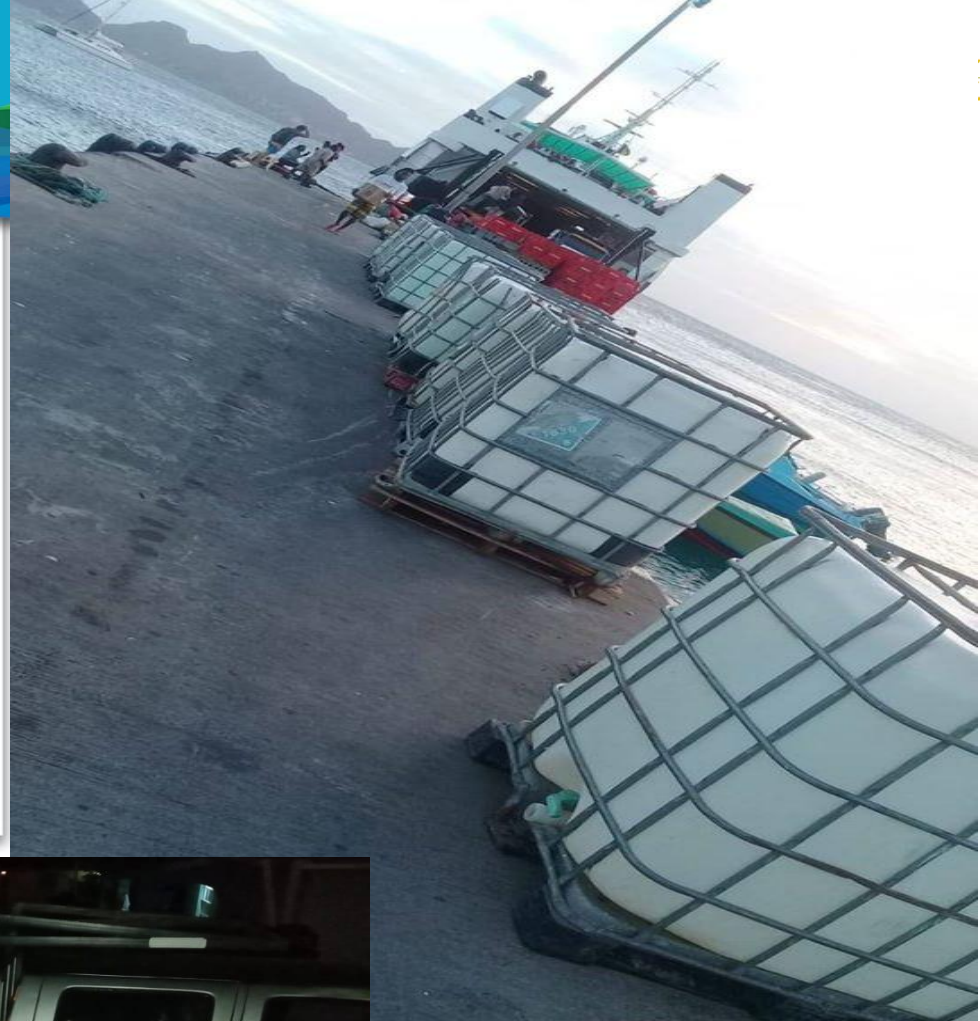
THE CWSA WISHES TO ADVISE CUSTOMERS IN THE **FOLLOWING AREAS** YOUR SUPPLY WOULD BE DISRUPTED AT THE BELOW MENTIONED TIMES.
PLEASE ENSURE THAT THERE IS ADEQUATE WATER STORAGE IN YOUR HOME OR BUSINESS.

WEDNESDAY, MAY 20TH 2020, FROM 9:00 A.M. UNTIL 2:00 P.M.

- | | | |
|-----------------------|---------------|----------------|
| • FOUNTAIN-VILLA ROAD | • UPPER VILLA | • FOUNTAIN |
| • VILLA FLAT | • GLEN | • LOWER BELAIR |

RESIDENTS CURRENTLY IN UNAFFECTED AREAS ARE ASKED TO OBSERVE STRICT WATER CONSERVATION MEASURES AND TO ASSIST THE CWSA IN MAINTAINING A CONSISTENT SUPPLY.

THE CWSA REGRETS THE INCONVENIENCE CAUSED BY THESE ADVERSE WEATHER CONDITIONS..



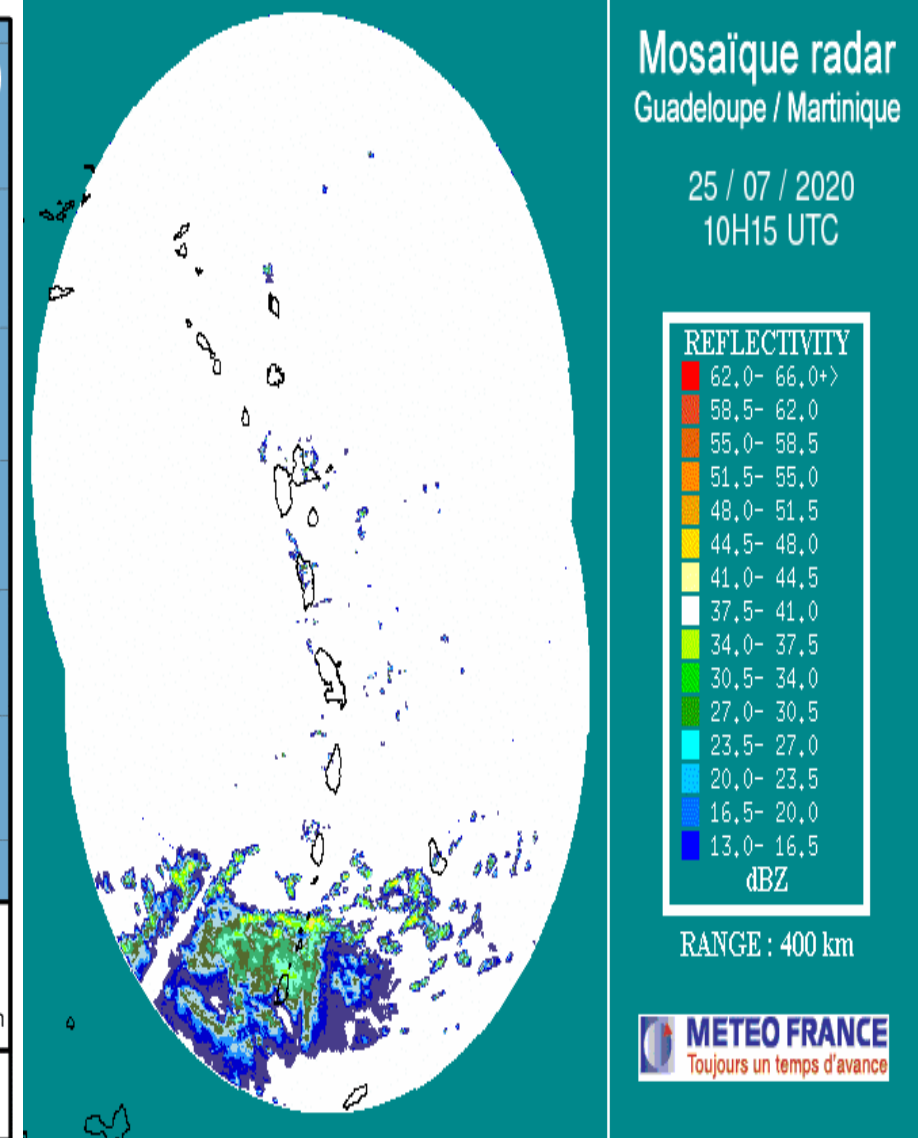
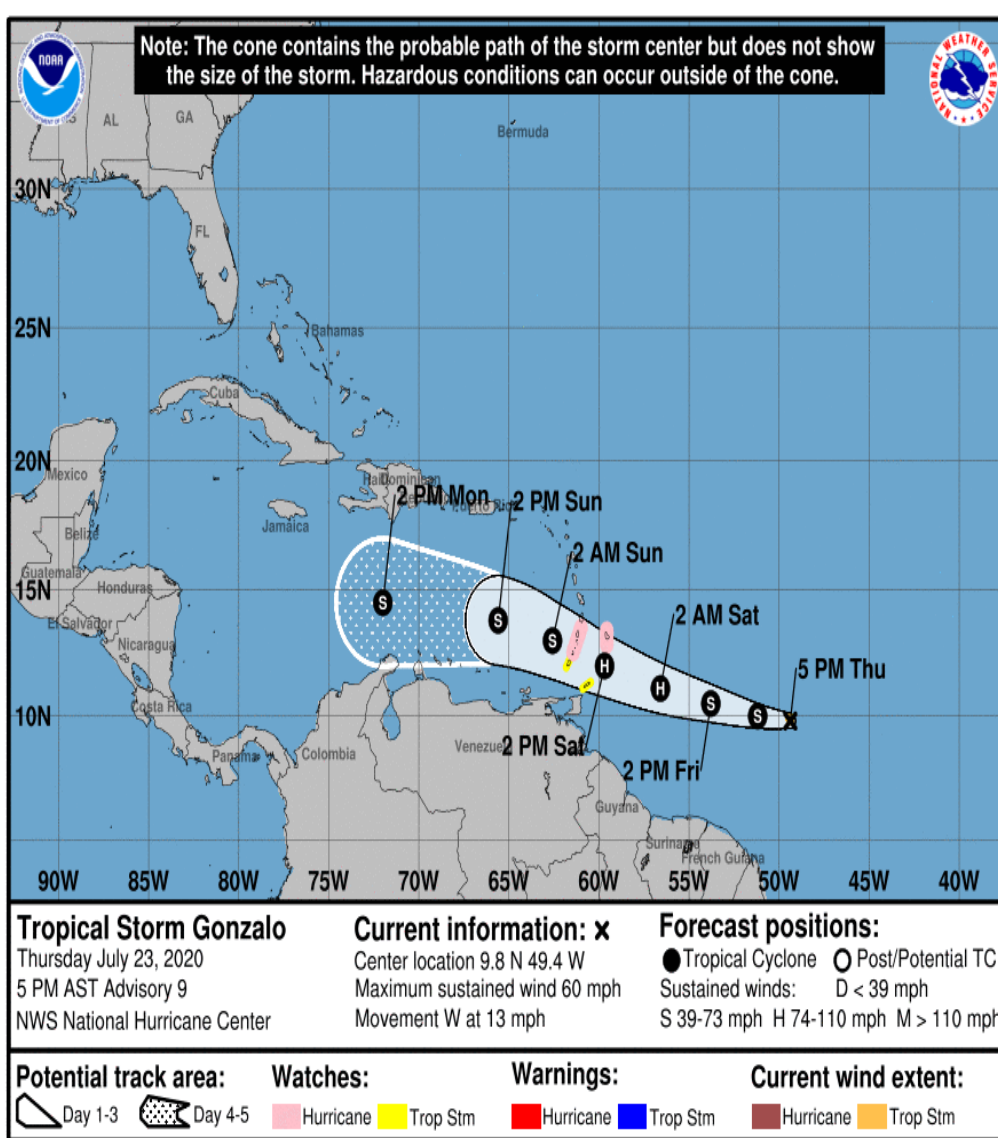
- Water rationing took place island wide. Daily water disruptions lasting hours.



Drought Situation....Agriculture impact



- Losses to overall production are estimated at 16 million Eastern Caribbean dollars (US \$6 M) . It was broken down by commodity and the values are as follow: Vegetables \$6.1 M; root crops \$ 4.4; Plantains \$4.3M; Bananas \$762,000; herbs \$ \$243,000; other commodities \$526,000.

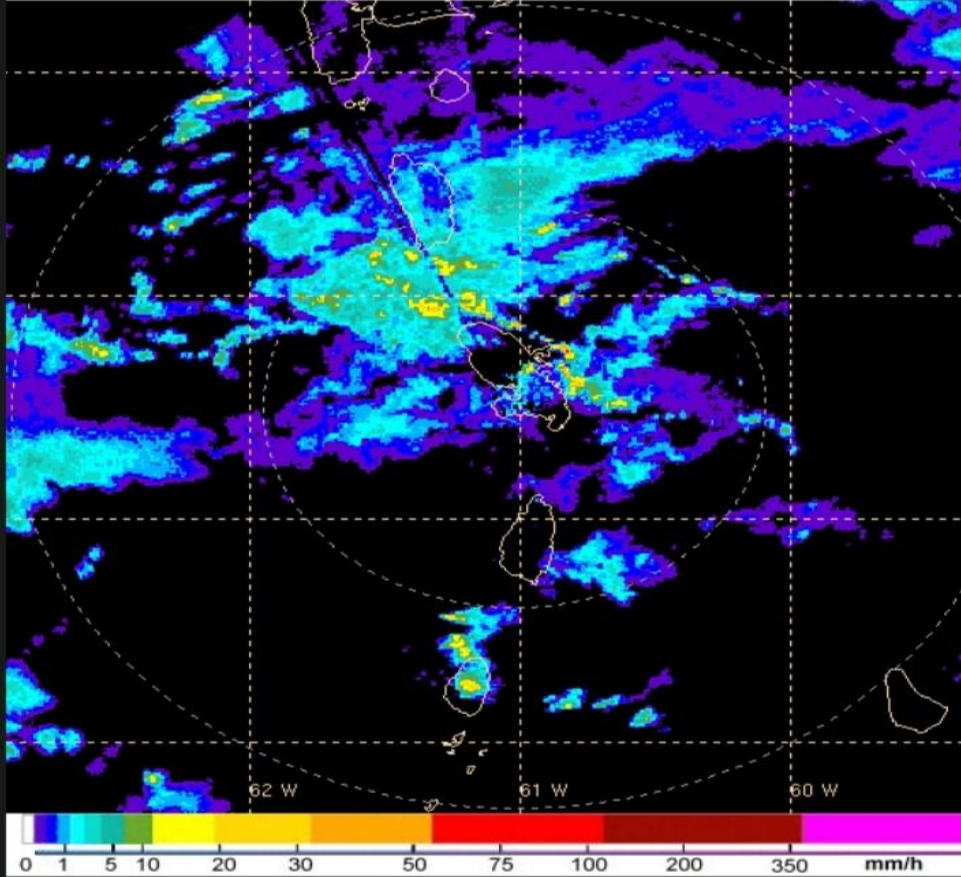


- SVG placed under Tropical Storm Warning & Hurricane Watch as Tropical Storm Gonzalo approached the Southern Caribbean.
- Grenadine islands of Canouan & Union Island reported flooding and strong winds...27 knots maximum gust at Argyle International Airport (AIA).

Tropical Wave 10% TC (Delta)



Radar Martinique 01/10/20 18:45 locales



© Météo France 2016 - Tous droits de reproduction réservés



- 119.3 mm Majorca station (CWSA) in 6 hours.
- Landslide in South Rivers.



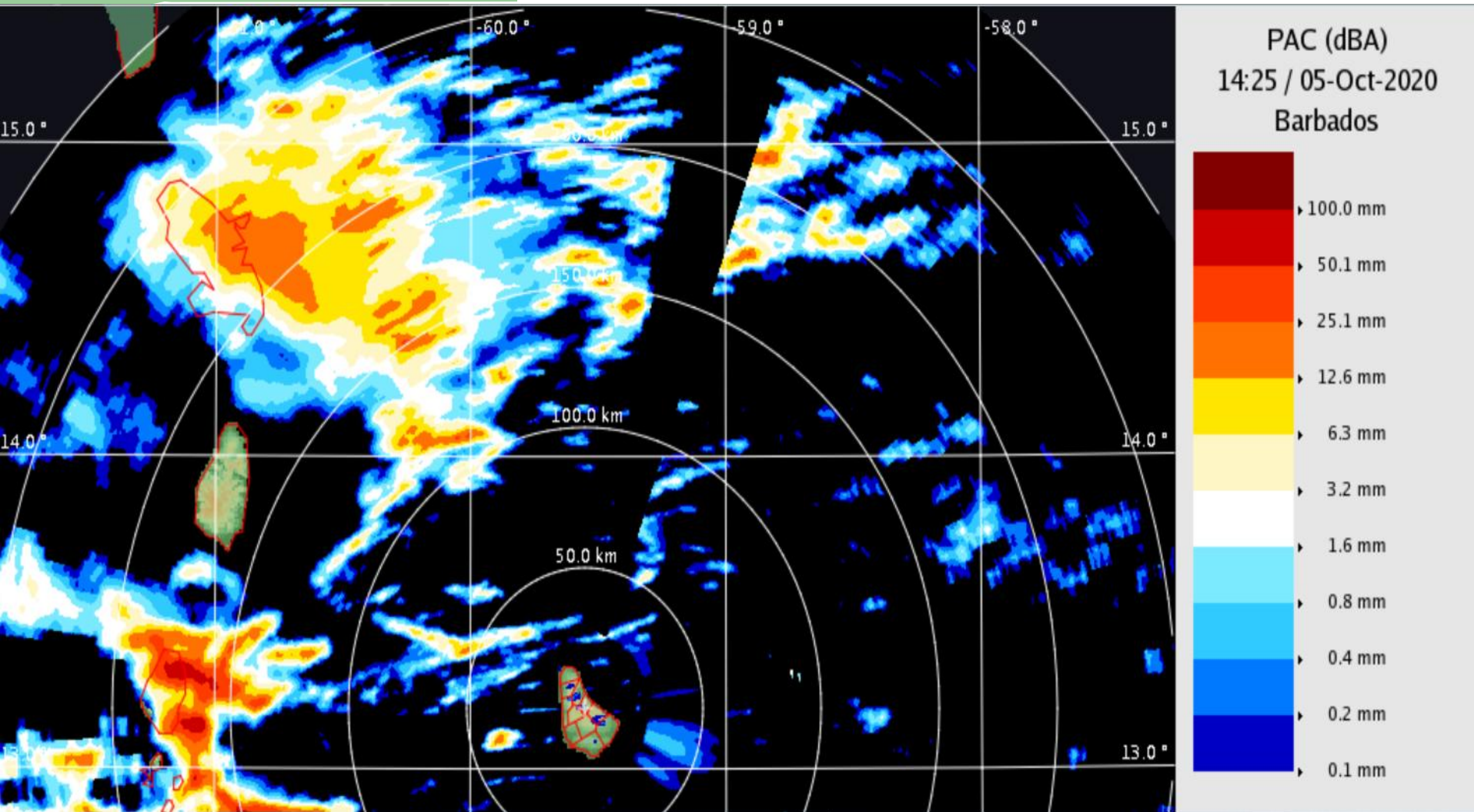
TW Impact



- Landslide/fallen tree at Ashborton, Gomea
- Landslide in Evesham
- Damages to property; mainly retaining walls



Trough system 5th Oct



- 6 hour rainfall estimate 50mm to 100 mm North Sections of Mainland St. Vincent.

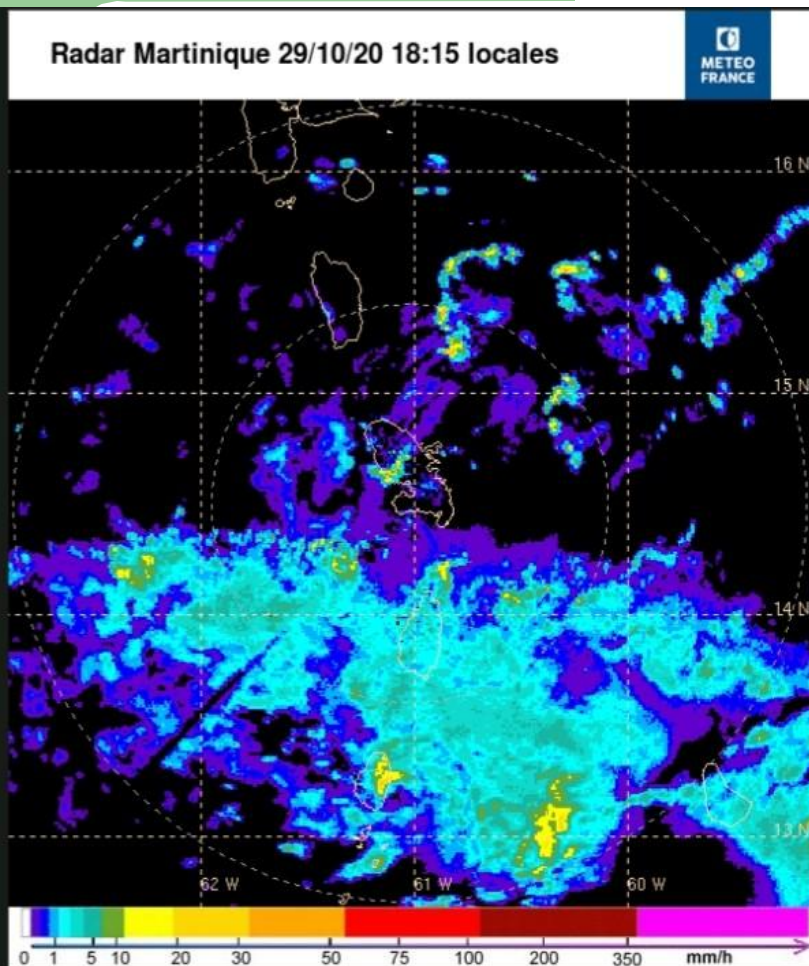


Trough system Impact



- Northeast Section of the island cut off.
- Damages to property; mainly retaining walls

Tropical Wave 20% TC (Eta)



29-Oct-2020 22:14	OMO TVSA 292214Z AUTO 36022G37KT 310V100 25/24 Q1006	
29-Oct-2020 22:15	OMO TVSA 292215Z AUTO 36023G37KT 310V100 25/24 Q1006	
29-Oct-2020 22:16	OMO TVSA 292216Z AUTO 36021KT 310V100 25/24 Q1006	
29-Oct-2020 22:17	OMO TVSA 292217Z AUTO 36022KT 320V100 25/24 Q1006	
29-Oct-2020 22:18	OMO TVSA 292218Z AUTO 36022KT 320V100 25/24 Q1005	
29-Oct-2020 22:19	OMO TVSA 292219Z AUTO 36022KT 320V100 25/24 Q1005	
29-Oct-2020 22:20	OMO TVSA 292220Z AUTO VRB23KT 25/24 Q1006	
29-Oct-2020 22:21	OMO TVSA 292221Z AUTO VRB23G38KT 25/24 Q1006	
29-Oct-2020 22:22	OMO TVSA 292222Z AUTO VRB22G38KT 25/24 Q1006	
29-Oct-2020 22:23	OMO TVSA 292223Z AUTO VRB22G38KT 25/24 Q1006	
29-Oct-2020 22:24	OMO TVSA 292224Z AUTO VRB18KT 25/24 Q1006	
29-Oct-2020 22:25	OMO TVSA 292225Z AUTO VRB15KT 25/24 Q1006	
29-Oct-2020 22:26	OMO TVSA 292226Z AUTO VRB16KT 25/24 Q1006	
29-Oct-2020 22:27	OMO TVSA 292227Z AUTO 24017KT 210V020 25/24 Q1006	

- 29th October to 1st November
- Majorca recorded 310.3 mm (12.2 inches) during the 4-day event
- Maximum wind gust 38 knots (44 mph) at Argyle.



Tropical Wave 20% TC (Eta)



- 166 Homes sustained damages
- 20 completely destroyed



Tropical Wave 20% TC (Eta)



- Flooding and landslides were reported island wide as well as damages to bridges

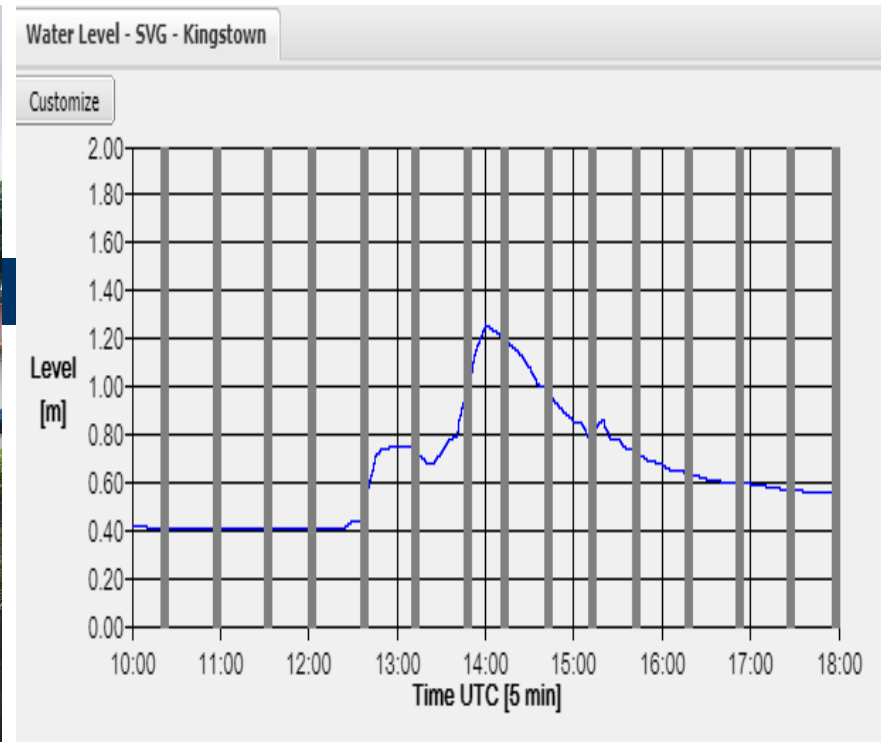
Tropical Wave 20% TC (Eta)



- Agriculture sector impacted...Preliminary figure EC \$1.4 Million
- Assessors are presently compiling reports from the assessments to quantify damages & losses to homes.



Trough system 14th-16th Nov



- 2 year old child was washed away by the heavy flowing river on Sunday 15th November 2020....The body was recovered by the SVG Coast Guard



Thank You!